



# MONTHLY MEMBERSHIP PROGRESS REPORT

District 3 L

Results as of: 9/30/2015

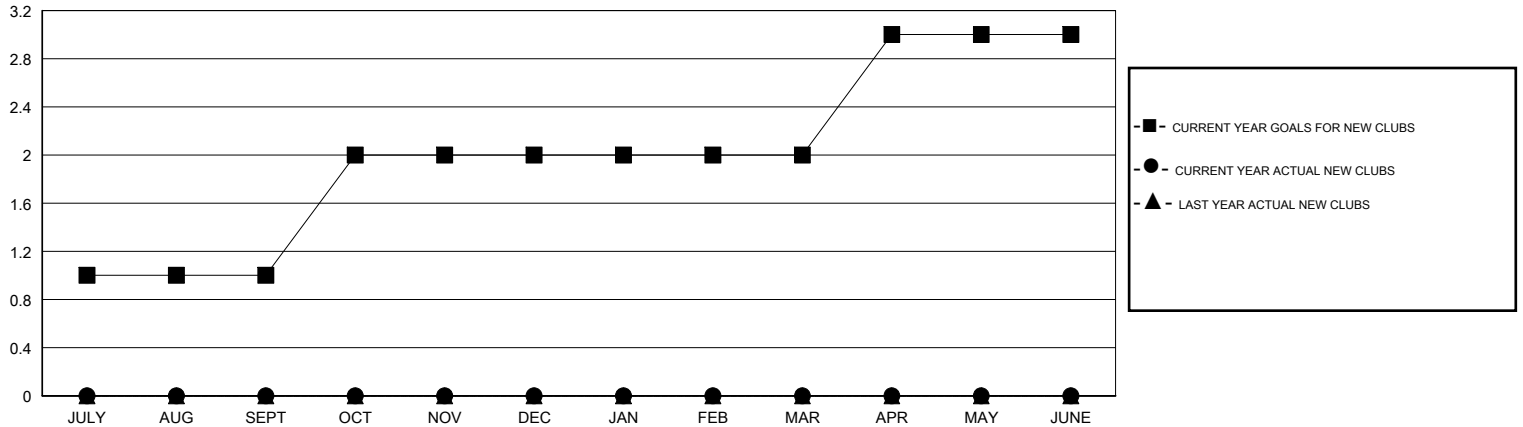
GMT: HAL GRIFFIN

LOCATION OKLAHOMA

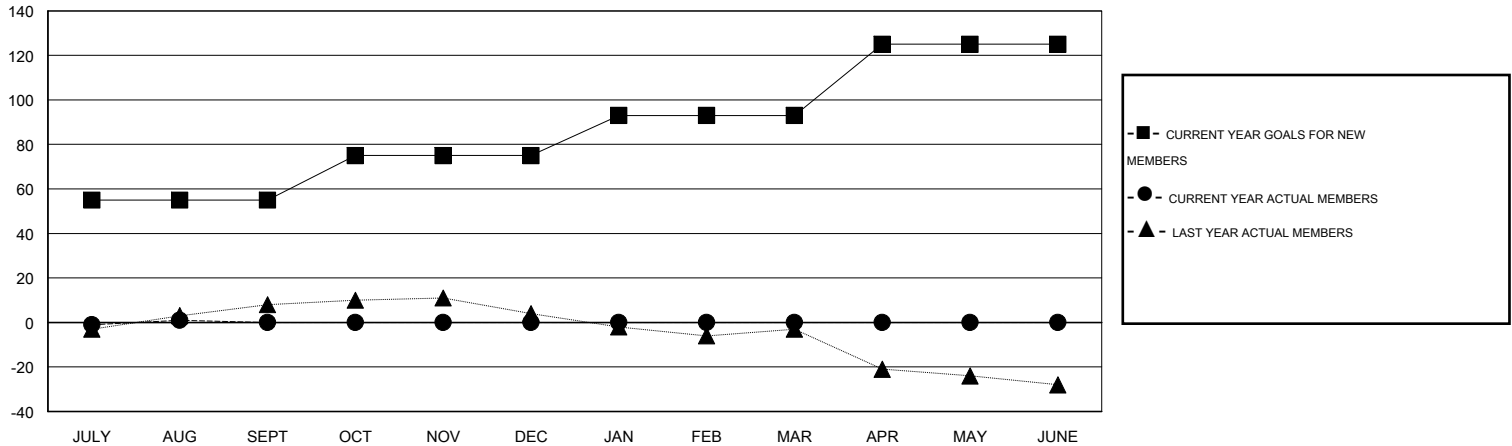
GMT CA 1

Clubs					Members				
RESULTS FOR 2015-2016					RESULTS FOR 2015-2016				
QUARTER	NEW CLUB GOAL	NEW CLUBS	DROPPED CLUBS	NET GAIN/LOSS	QUARTER	NEW MEMBER GOAL	CHARTER AND NEW MEMBERS ADDED	DROPPED MEMBERS	NET GAIN/LOSS
JULY/AUG/SEPT	1	0	0	0	JULY/AUG/SEPT	55	14	14	0
OCT/NOV/DEC	1	0	0	0	OCT/NOV/DEC	20	0	0	0
JAN/FEB/MAR	0	0	0	0	JAN/FEB/MAR	18	0	0	0
APR/MAY/JUNE	1	0	0	0	APR/MAY/JUNE	32	0	0	0

GOALS AND ACTUAL NEW CLUBS CUMULATIVE



GOALS AND ACTUAL MEMBERS CUMULATIVE



DROPPED CLUBS: 0	9 CLUBS OF 36 ADDED 1 OR MORE NEW MEMBERS	<u>GENDER DISTRIBUTION</u>	
<u>DROPPED MEMBERS</u>		MALE	522 (67.62%)
DECEASED	1	FEMALE	250 (32.38%)
CLUB CANCELLED	0	<u>FAMILY UNIT MEMBERS</u> 113	
OTHER	13	<u>HEAD OF HOUSEHOLD</u> 56	
<b>TOTAL</b>	<b>14</b>	<u>NON-HEAD OF HOUSEHOLD</u> 57	

[CLICK HERE FOR HEALTH ASSESSMENT DATA](#)